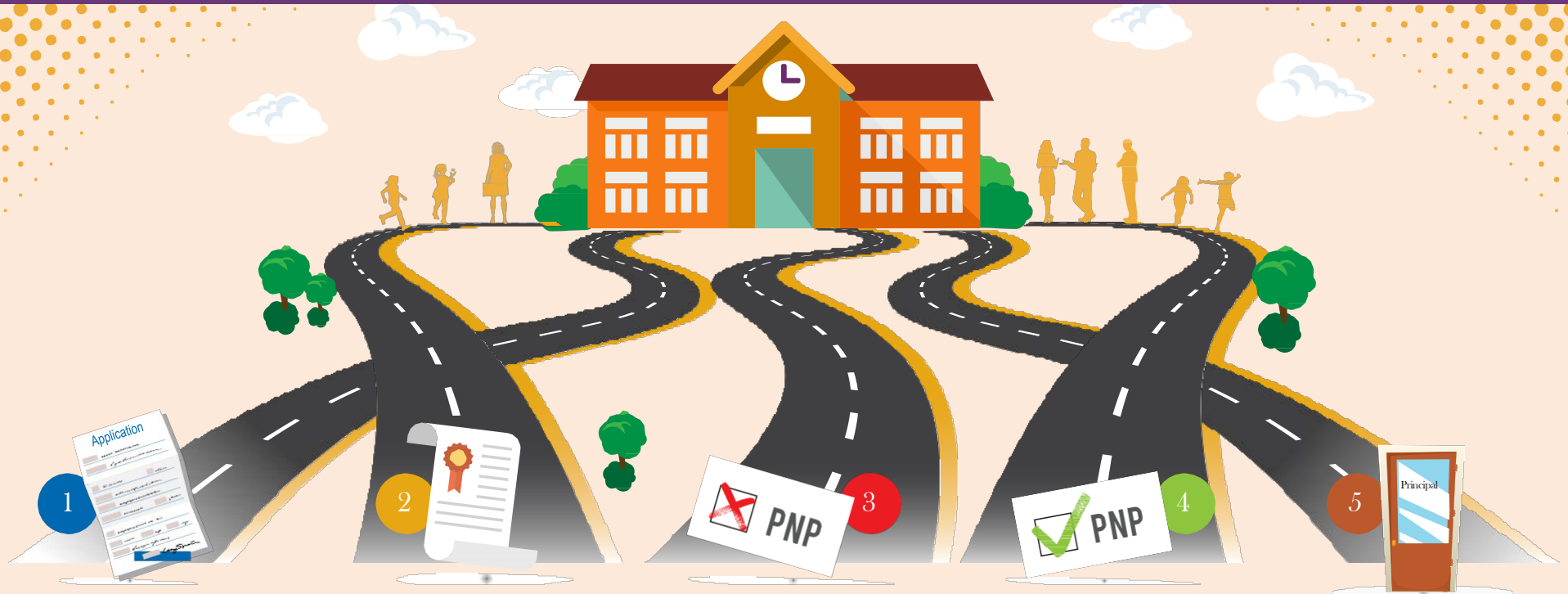


Turnaround Leadership Pathways (TLP)

In Hillsborough County, we strategically focus on leadership in high-need schools by investing in teachers and administrators at all stages of their career.



Teachers without master's degrees

Teachers apply to high-need schools and assume teacher-leader roles. After 2 years of experience, teachers declare interest in the TLP and apply for the Master of Educational Leadership degree program at the University of Tampa. Those selected for the M.Ed. degree program teach in select high-need schools. *Any teacher in a high-need school who meets success criteria receives priority for placement into the Future Leaders Academy (FLA).*

Current FLA graduates

Graduates of FLA declare interest in TLP and apply to teach in high-need schools. *FLA graduates in TLP who meet success criteria receive priority for assistant principal positions, first in low-need schools then later at a high-need school. PLC learning sessions related to leadership in high-need schools is provided.*

APs who have not completed PNP

Current APs may declare interest in TLP and apply for vacancies in high-need schools after 2 or more years of successful experience. *APs in high-need schools who meet success criteria receive priority for placement into the Preparing New Principals Program (PNP).*

APs who have completed PNP

Graduates of PNP declare interest in TLP and apply for vacancies in high-need schools. TLP members may apply for the Educational Specialist degree in Turnaround Schools Leadership at the University of South Florida. *All APs in a high-need school who meet success criteria receive priority for principal vacancies in low-need schools first, then later at a high-need school.*

Principals

Current principals may declare interest in TLP and apply for vacancies in high-need schools after 2 or more years of successful experience. TLP members may apply for the Educational Specialist degree in Turnaround Schools Leadership at the University of South Florida. *All principals in a high-need school who meet success criteria receive priority for District leadership positions.*

High-Need Schools:

Schools under state oversight/sanctions, identified by the District.